



*Werner Kern*

FEEL THE DIFFERENCE







WERNER  
KERN  
*Bridal*

page  
54



page  
58



*suny*  
by  
ANNA KERN

page  
46

Werner Kern  
Ballerinas

page  
62





# ADDING DANCE TO LIFE

---

Dance embodies life – and life has many facets! Standard and Latin dances challenge the foot in different ways. From expansive to restrained, striding to spirited, dance shoes from Werner Kern Classic give the foot guidance and lightness. They offer support where it is needed and freedom where it is wanted.

The Werner Kern Classic collection comprises select materials, elegant aesthetics with contemporary fashion accents and the utmost in wearing comfort, for a proven combination. These dance shoes stand for trusted quality and superior comfort.

Our comfort models make dance a pleasure at any age, and some models have already gained a true cult following. Nappa leather as soft as gloves, supple kid suede, breathable leather linings and a fantastic array of fits to suit any foot make these models for ladies and gentlemen outstanding all-round dance shoes.

Carefully crafted by hand for you in Italy.



page 4



page 30



page 44





# NEW IN

For everyone who loves sneakers!

NEW

## Carol

Nappa white/silver/brocade  
Micro Heel 1 cm  
with removable footbed

comfort



NEW

## Carol

Suede/patent black/brocade  
Micro Heel 1 cm  
with removable footbed

comfort



## Taylor LS

Nappa caramel/creme  
Heel 1.5 cm



## Taylor LS

Nappa black/white  
Heel 1.5 cm  
(also available with  
suede leather sole)



## Taylor LS

Nappa barolo/creme  
Heel 1.5 cm



Taylor, lightweight with suede and super flexible leather sole, giving freedom and mobility, great for Swing and Lindy Hop!

## Taylor LS

Patent/Suede black  
Heel 1.5 cm  
(also available with  
suede leather sole)



LS Ledersohle  
street-leathersole





Ultralight slip on suede sole boots with soft suede uppers, perfect for Line Dancing and West Coast Swing. Handmade in Italy.

### Cocco

*Suede black*  
*Micro Heel 1.5 cm*



### Harper

*Suede black*  
*Micro Heel 1.5 cm*



### Harper

*Suede marrone*  
*Micro Heel 1.5 cm*



### Harper

*Suede red*  
*Micro Heel 1.5 cm*







Flats 1.5 cm

### Fanny

Nappa black  
Micro Heel 1.5 cm



### Taylor

Nappa black/white  
Micro Heel 1.5 cm  
(also available with  
street sole)



### Franca

Suede black  
Micro Heel 1.5 cm



### Fenja

Nappa black  
Micro Heel 1.5 cm

NEW



### Taylor

Patent/Suede black  
Micro Heel 1.5 cm  
(also available with  
street sole)



### Vega

Suede black  
Micro Heel 1.5 cm







Heel 3.4 cm / comfort

NEW

Stine

Nappa black  
Heel 3.4 cm  
with removable footbed

comfort



Comfort models

comfort

Every individual's feet are unique. Our comfort footbed models offer dancers of all ages and those with especially discerning standards a secure hold and comfort while dancing. The anatomically formed joint support hugs the sole of the foot, providing stable support and comfort through a wider design.



### Felice

*Chevro antik*  
Heel 3.4 cm

comfort



### Daniela

*Suede black*  
Heel 3.4 cm  
with elastic strap

comfort



### Ronja

*Suede black*  
Heel 3.4 cm

comfort



### Felice

*Nappa black*  
Heel 3.4 cm

comfort



### Gala

*Suede black*  
Heel 3.4 cm  
(also available with 4.5 and 6 cm)

comfort



### Cindy

*Nappa black*  
Heel 3.4 cm

comfort



### Felice

*Nappa beige*  
Heel 3.4 cm

comfort



### Alice

*Quadrato black*  
Heel 3.4 cm

comfort





Heel 3.5 cm / comfort



### Marina

Suede/Patent black  
Heel 3.4 cm

comfort



### Runa

Suede black  
Heel 3.5 cm  
with split sole

comfort

NEW



### Olivia

Suede black  
Heel 3.4 cm  
(also available  
with 6 cm)

comfort



### Runa

Brocade 15  
Heel 3.5 cm  
with split sole

comfort

NEW





### Kim

*Chevro platin/Fantasia beige*  
Heel 3.5 cm

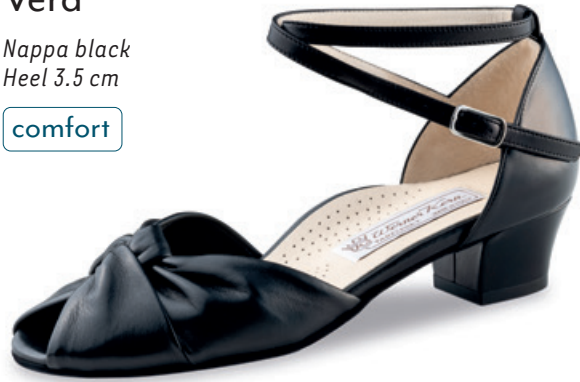
comfort



### Vera

*Nappa black*  
Heel 3.5 cm

comfort



### Rikke

*Suede black/  
Stella glitter black*  
Heel 3.5 cm

comfort



### Solveig

*Nappa perl silver*  
Heel 3.5 cm

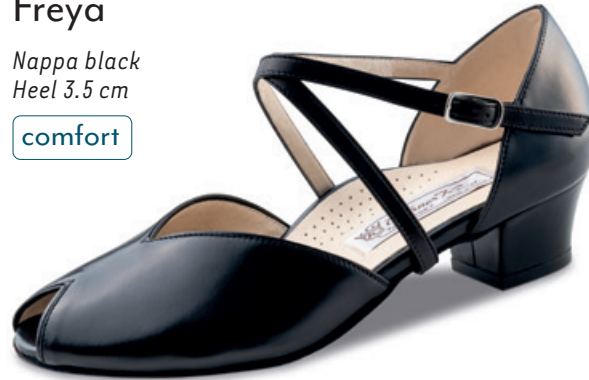
comfort



### Freya

*Nappa black*  
Heel 3.5 cm

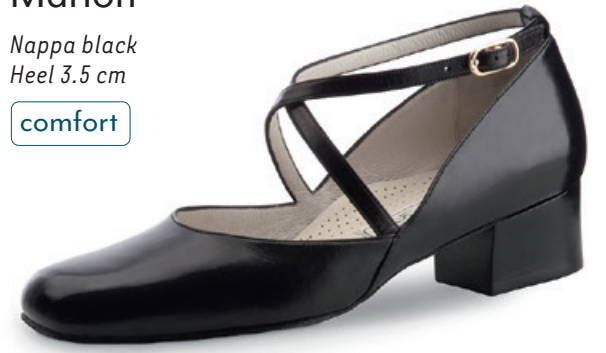
comfort



### Marion

*Nappa black*  
Heel 3.5 cm

comfort



### Sanna

*Quadrato black*  
Heel 3.5 cm

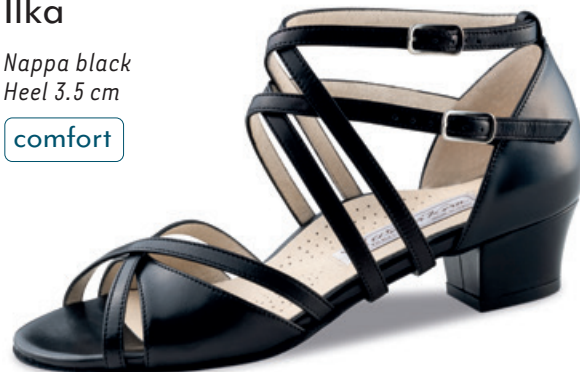
comfort



### Ilka

*Nappa black*  
Heel 3.5 cm

comfort



### Ines

*Nappa black*  
Heel 3.5 cm

comfort





Heel 4.5 cm / comfort



### Anke

Suede grey  
Heel 4.5 cm  
with removable footbed

comfort



### Emma

Nappa black/white  
Heel 4.5 cm

comfort



### Gala

Suede black  
Heel 4.5 cm  
(also available  
with 3.4 and 6 cm)

comfort



### Naia

Nappa beige  
Heel 4.5 cm

comfort



### Emma

Nappa kaduna/creme  
Heel 4.5 cm

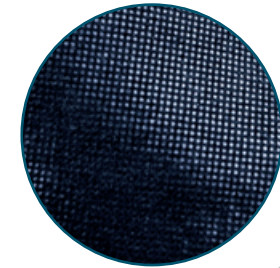
comfort



### Jessie

Stella glitter blue  
Heel 4.5 cm

comfort



### Ashley

Suede black  
Heel 4.5 cm  
(also available  
with 6 cm)

comfort



### Debby

Nappa black  
Heel 4.5 cm

comfort



### Ruby

Suede black  
Heel 4.5 cm  
(also available  
with 6 cm)

comfort



### Tabea

Suede/Patent black  
Heel 4.5 cm  
with removable footbed

comfort



### Gala

Chevro antik  
Heel 4.5 cm

comfort



### Gina

Nappa black  
Heel 4.5 cm

comfort



### Sidney

Nappa black  
Heel 4.5 cm

comfort



### Olivia

Nappa black  
Heel 4.5 cm

comfort



### Lea

Suede black  
Heel 4.5 cm

comfort





Heel 5 cm / comfort

### Laura

*Shark antik*  
Heel 5 cm  
with elastic insert

comfort



### Laura

*Nappa black*  
Heel 5 cm  
with elastic insert

comfort



  
Werner Kern

Heel 6 cm / comfort

Gala

Suede black  
Heel 6 cm  
(also available  
with 3.4 and 4.5 cm)

comfort



Olivia

Suede black  
Heel 6 cm  
(also available  
with 3.4 cm)

comfort



Ashley

Suede black  
Heel 6 cm  
(also available  
with 4.5 cm)

comfort



Tamara

Suede grey  
Heel 6 cm

comfort



Layla

Nappa black  
Heel 6 cm

comfort



Kyra

Nappa black  
Heel 6 cm

comfort





## Merle

Suede black  
Heel 6 cm

comfort



Heel 4.5 cm / comfort

## Ruby

Suede black  
Heel 6 cm  
(also available  
with 4.5 cm)

comfort



## Bess

Suede black/Chevro antik  
Heel 4.5 cm

comfort

NEW



## Holly

Stella/Suede black  
Heel 4.5 cm

comfort

NEW



## Gilian

Nappa black  
Heel 6 cm

comfort



## Coleen

Chevro platin/Fantasia beige  
Heel 4.5 cm

comfort

NEW



## Sonia

Suede black  
Heel 4.5 cm  
(also available  
with 5 cm)

comfort

NEW





⋮ *Heel 5 cm / comfort*

**Ebony**

*Stella glitter blue  
Heel 5 cm*

comfort



**Billy**

*Chevro antik  
Heel 5 cm*

comfort



**Ruth**

*Nappa black  
Heel 5 cm*

comfort



**Ruth**

*Nappa beige  
Heel 5 cm*

comfort





### Gaby

Suede black/Chevro antik  
Heel 5 cm

comfort



### Sonia

Suede black  
Heel 5 cm  
(also available  
with 4.5 cm)

comfort



### Smilla

Nappa perl nude  
Heel 5 cm

comfort



### Fatima

Suede black  
Heel 5 cm  
(also available  
with 6 cm)

comfort



### Murielle

Suede black  
Heel 5 cm

comfort



### Ilona

Suede black  
Heel 5 cm

comfort



Heel 6 cm / comfort

Georgia

Suede black  
Heel 6 cm

comfort

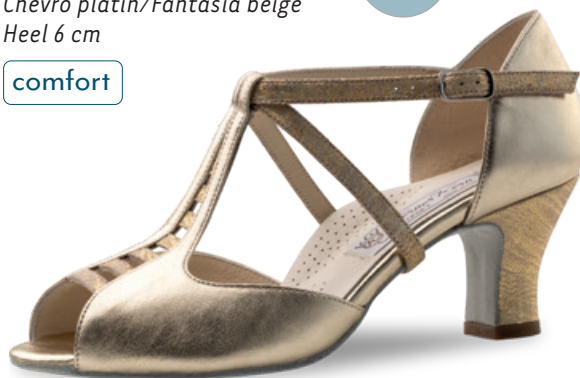


Holly

Chevro platin/Fantasia beige  
Heel 6 cm

comfort

NEW



Lindsay

Nappa red  
Heel 6 cm

comfort



Paulette

Nappa perl nude  
Heel 6 cm

comfort



Fatima

Suede black  
Heel 6 cm  
(also available  
with 5 cm)

comfort



Ginny

Brocade black-silver/  
Patent black  
Heel 6 cm

comfort









Heel 5.5 cm

Francis

Nappa perl silver  
Heel 5.5 cm



Swantje

Suede black/  
Chevro antik  
Heel 5.5 cm



Tiziana

Chevro silver  
Heel 5.5 cm



Astrid

Nappa perl nude  
Heel 5.5 cm



Asta

Suede black  
Heel 5.5 cm  
(also available  
with 6.5 cm)



Claudia

Suede black  
Heel 5.5 cm  
(also available  
with 6.5 cm)



Eva

Suede black  
Heel 5,5 cm  
also available  
for narrow feet



Mary

Chevro silver  
Heel 5.5 cm





## Francis

Suede black  
Heel 5.5 cm  
(also available  
with 6.5 cm)



## Holly

Suede blue/  
Chevro silver  
Heel 5.5 cm



## Niki

Suede black  
Heel 5.5 cm  
for narrow feet



narrow

## Holly

Suede black/  
Chevro antik  
Heel 5.5 cm



## Dora

Nappa perl nude  
Heel 5.5 cm  
for narrow feet



narrow



Heel 6.5 cm

Avery  
Stella glitter black  
Heel 6.5 cm



Holly  
Nappa beige/black  
Heel 6.5 cm



Tilla  
Stella glitter black  
Heel 6.5 cm



July  
Nappa black  
Heel 6.5 cm  
(also available  
with 8 cm)



Holly  
Brocade black-silver/  
Patent black  
Heel 6.5 cm



Asta  
Suede black  
Heel 6.5 cm  
(also available  
with 5.5 cm)



Asta  
Shark antik  
Heel 6.5 cm



Claudia  
Suede black  
Heel 6.5 cm  
(also available  
with 5.5 cm)





## Mary

*Chevro platin/  
Fantasia beige  
Heel 6.5 cm*



## Dalia

*Suede black  
Heel 6.5 cm*



## Francis

*Suede black  
Heel 6.5 cm  
(also available  
with 5.5 cm)*



## Astrid

*Nappa/Suede black  
Heel 6.5 cm*



## Astrid

*Nappa perl silver  
Heel 6.5 cm*



## Eva

*Chevro silver  
Heel 6.5 cm*



## Eva

*Suede black/  
Chevro antik  
Heel 6.5 cm*



## Eva

*Nappa perl nude  
Heel 6.5 cm*



NEW

### Lindsay

*Stella glitter blue*  
Heel 6.5 cm



### Ida

*Stella glitter/  
Suede black*  
Heel 6.5 cm  
for narrow feet

narrow



### July

*Brocade silver multi*  
Heel 6.5 cm



### Amy

*Nappa perl nude*  
Heel 6.5 cm  
for narrow feet

narrow



NEW

### Mary

*Chevro fuchsia/multi*  
Heel 6.5 cm



### Jamie

*Brocade black/silver*  
Heel 6.5 cm  
with silver  
metallic heel



### Irina

*Suede black*  
Heel 6.5 cm  
for narrow feet

narrow





July

*Chevro antik*  
Heel 6.5 cm



*even higher?*

Heel 8 cm

Elsa

*Suede black*  
Heel 6.5 cm  
with elastic strap



July

*Nappa black*  
Heel 8 cm  
(also available  
with 6.5 cm)



Liz

*Chevro antik*  
Heel 6.5 cm



Asta

*Nappa black*  
Heel 8 cm



Alina

*Glitter multi*  
Heel 8 cm



Heel 5.5 cm

Patty

*Chevro antik*  
Heel 5.5 cm



Patty

*Nappa black*  
Heel 5.5 cm  
(also available  
with 6.5 and 8 cm)



Betty

*Nappa black*  
Heel 5.5 cm  
(also available  
with 6.5 cm)



Patty

*Quadrato black*  
Heel 5.5 cm



Patty

*Nappa red*  
Heel 5.5 cm



Linda

*Nappa black*  
Heel 5.5 cm  
(also available  
with 6.5 cm)



Shirley

*Nappa black*  
Heel 5.5 cm



Celine

*Nappa black*  
Heel 5.5 cm





NEW

### Pippa

Suede black/  
Chevro antik  
Heel 5.5 cm



Heel 6.5 cm



### Rita

Nappa black  
Heel 5.5 cm  
(also available  
with 6.5 cm)



### Ines

Nappa red  
Heel 6.5 cm



### Fabiola

Nappa black  
Heel 6.5 cm  
for narrow feet

narrow



### Ines

Nappa black  
Heel 5.5 cm  
(also available  
with 6.5 cm)



### Ines

Nappa black  
Heel 6.5 cm  
(also available  
with 5.5 cm)



### Abby

Brocade black-silver  
Heel 6.4 cm  
with silver metallic heel



### Melodie

Suede black  
Heel 6.4 cm  
with silver metallic heel



### Sarah

Suede black  
Heel 6.4 cm  
with silver metallic heel



### Betty

Nappa black  
Heel 6.5 cm  
(also available  
with 5.5 cm)



### Betty

Chevro antik  
Heel 6.5 cm



### Betty

Brocade 15  
Heel 6.5 cm



### Linda

Chevro silver  
Heel 6.5 cm



### Linda

Nappa black  
Heel 6.5 cm  
(also available  
with 5.5 cm)





## Rita

Nappa black/ Patent black  
Heel 6.5 cm  
(also available  
with 5.5 cm)



## Betty

Brocade silver multi  
Heel 6.5 cm



## Rita

Satin flesh  
Heel 6.5 cm



## Andrea

Nappa black  
Heel 6.5 cm



## Laura

Satin flesh  
Heel 6.5 cm  
with elastic insert



## Patty

Nappa black  
Heel 6.5 cm  
(also available  
with 5.5 and 8 cm)



Heel 8 cm

## Patty

Nappa black  
Heel 8 cm  
(also available  
with 5.5 and 6.5 cm)









# SEDUCTION FOR THE FEET

---

Argentine tango is passion brought to life through dance. The rhythm of the music sparks intense communication between dance partners: every movement a statement. Extravagant and supple – the ideal shoe is as elegant as the dance itself.

It provides support where necessary and offers freedom for boundless, spirited expression when the dance and the partners demand it. The models in the Nueva Epoca collection reflect the joy of Italian design with exquisite details and striking colours with assertive lines.



NUEVA  
EPOCA

The trendsetters in the Nueva Epoca collection are made by hand in Italy, using traditional methods. Painstakingly selected materials include kid leather as soft as gloves, breathable leather linings, a flexible latex midsole and shock-absorbing heel, all providing an incomparable feel both during wearing and dancing. The high-quality suede sole allows for easy, controllable turns and gliding on the dance floor. It's a new era in dance – in more than just looks!



Heel 6 cm / slim

India

Satin white  
Heel 6 cm



Mable

Satin white  
Heel 6 cm



Karen

Suede/Patent black  
Heel 6 cm



Joy

Suede black  
Heel 6 cm  
for narrow feet



narrow





### Paris

Satin white  
Heel 6 cm



### Rose

Chevro/Brocade platin  
Heel 6 cm



### Alexia

Suede grey/Patent black  
Heel 6 cm



### Rosita

Suede blue/Patent black  
Heel 6 cm



### Vicky

Suede black/red  
Heel 6 cm



## Sierra

*Chevro platin*  
Heel 6 cm



Heel 7 cm / slim

## Violeta

*Chevro/Petrol prugna*  
Heel 7 cm

NEW



## Marissa

*Suede red*  
Heel 6 cm



## Caia

*Chevro silver*  
Heel 7 cm

NEW





## Martinee

*Chevro/Cielo fuchsia*  
Heel 7 cm

NEW



## Berenice

*Stella glitter beige*  
Heel 7 cm

NEW



## Sylvie

*Stella glitter black*  
Heel 7 cm

NEW



## Cleo

*Chevro platin*  
Heel 7 cm

NEW



## Ornella

*Stella glitter beige*  
Heel 7 cm



### Linea

Suede red  
Heel 7 cm



### Maxima

Suede indigo/Ariel black  
Heel 7 cm



### Riana

Suede black  
Heel 7 cm  
with silver  
metallic heel



### Yolanda

Chevro silver  
Heel 7 cm







### Cosima

*Suede red/  
Ariel black  
Heel 7 cm*



### Reyna

*Suede indigo  
Heel 7 cm*



### Gracia

*Suede blue  
Heel 7 cm*



### Sienna

*Suede/Ariel black  
Heel 7 cm*



### Pearl

*Chevro silver/  
Brocade platin  
Heel 7 cm*



### Tessa

Suede hazel/Chevro copper  
Heel 7 cm



### Paloma

Nappa white/Patent black  
Heel 7 cm



### Valeria

Stella glitter beige  
Heel 7 cm



### Christina

Suede/Ariel black  
Heel 7 cm



### Lydia

Suede grey/Ariel black  
Heel 7 cm





Heel 8 cm / slim

### Camelia

Chevro/Petrol prugna  
Heel 8 cm

NEW



### Jacinta

Suede black  
Heel 8 cm  
with gold metallic heel

NEW



### Martha

Suede black  
Heel 8 cm



### Filia

Suede fuchsia  
Heel 8 cm



### April

Suede/Ariel black  
Heel 8 cm



### Shakira

*Suede/Ariel black  
Heel 8 cm*



### Jaida

*Suede black  
Heel 8 cm*



### Donna

*Suede blue/Brocade black multi  
Heel 8 cm*



### Helen

*Suede hazel/Chevro copper  
Heel 8 cm*



### Talia

*Suede black/Patent red  
Heel 8 cm*







**Amalia**  
*Suede black*  
*Heel 8 cm*



**Serena**  
*Suede black*  
*Heel 8 cm*



**Angeles**  
*Chevro/Print capri blue*  
*Heel 8 cm*



**Flavia**  
*Suede red*  
*Heel 8 cm*  
*with gold metallic heel*



### Gloria

*Chevro/Brocade platin*  
Heel 8 cm



### Saskia

*Chevro copper/  
Print Leo*  
Heel 8 cm



### Paola

*Suede indigo/Ariel black*  
Heel 8 cm



### Lupe

*Patent black*  
Heel 8 cm



### Adora

*Patent red*  
Heel 8 cm





## Penelope

*Chevro/Nappa print olive*  
*Heel 8 cm*



## Josefina

*Suede grey/Ariel black*  
*Heel 8 cm*



Heel 9 cm / slim

## Corazon

*Suede viola*  
*Heel 8 cm*



## Simona

*Suede viola*  
*Heel 8 cm*



## Nora

*Suede/Patent black*  
*Heel 9 cm*





ALL YOU

Freedom's just  
another word  
for nothing  
left to lose

TH

JANIS JOPLIN





# ENCHANTINGLY VIBRANT

---

When the curtain goes down on the daily routine, life behind the scenes starts. This is where the body, rhythm and music come together as one to form a vibrant presence.

Salsa and bachata invigorate the body, halting the whirl of thoughts – welcome to the moment! Demanding rhythms, firm posture and mobility, and now your foot needs a dance partner that attracts the eye not just with a perfect fit and secure hold, but also with unconventional and provocative design.

**ANNA KERN**

*Designed in Italy*

Anna Kern shoes are the modern-day princesses among ladies dance shoes. Their youthful, progressive design is striking: glittering brocades, gold and silver, and a lovely narrow heel offer a fresh take on the idea of the dance shoe. Leather uppers and linings are joined through superior craftsmanship to form a shoe that represents the perfect marriage of the joy of movement and vitality expressed by Latin dance and a generous dash of glamour.



**140 - pureflex** for women (sizes 3 ½ - 8)  
Nappa/Canvas white  
with split PU sole



**145 - pureflex** for women (sizes 3 ½ - 8)  
Nappa/Velour black  
with split PU sole,  
with inserted suede leather sole



**150 - pureflex** for women (sizes 3 ½ - 8)  
Knit grey/black  
with split PU sole



**110 - pureflex** for women (sizes 3 ½ - 8)  
Knit black/grey/white  
with split PU sole



**115 - pureflex** for women (sizes 3 ½ - 8)  
Knit black/grey/red/white  
with split PU sole



**155 - pureflex** for women (sizes 3 ½ - 8)  
Suede black  
with split PU sole



**130 - pureflex** for women (sizes 3 ½ - 8)  
Knit blue/black  
with split PU sole



**135 - pureflex** for women (sizes 3 ½ - 8)  
Knit red/black  
with split PU sole



**120 - pureflex** for women (sizes 3 ½ - 8)  
Knit black  
with split PU sole





# THE EMBODIMENT OF PERFECTION

---

Precise steps, concentrated bodies, smooth, practiced repetitions. And with it all, a lightweight, comfortable shoe that can keep up with you during all your training needs. Down-to-earth, sporty, focused on the essentials – that's the simple SUNY dance sneaker by Anna Kern, available for both [women](#) and [men](#).



As a second shoe for training, it wins points for its sporty design, casual look and unpretentious air.

Made of lightweight, breathable mesh material,

it hugs the foot comfortably for a perfect fit.

Its PU sole has two parts (split-sole) for superior

flexibility and a flat heel, so controlled turns during training are a breeze. Men and women can wear the same casual models while still benefiting from an individual feminine or masculine fit.

SUNY by Anna Kern is the modern dance sneaker that adds a sporty twist to any training session, from salsa to kizomba and from bachata to rueda.

*also available in half sizes*



Heel 3 cm

**Babette**

559 - 30  
Suede black  
Heel 3 cm



Heel 3.5 cm

**Sabrina**

530 - 35  
Suede black  
Heel 3.5 cm



**Monique**

973 - 35  
Satin flesh  
Heel 3.5 cm



NEW

**Gabrielle**

520 - 35  
Satin bronze  
Heel 3.5 cm



Heel 5 cm

**Denise**

572 - 50  
Suede black  
Heel 5 cm



**Fabienne**

599 - 35  
Nappa silver  
Heel 3.5 cm



**Magalie**

908 - 50  
Nappa silver  
Heel 5 cm





**Meline**

580 - 50  
Nappa gold  
Heel 5 cm



**Lucile**

540 - 50  
Satin bronze  
Heel 5 cm



**Clemence**

960-50  
Suede black  
Heel 5 cm



**Noel**

874-50  
Nappa gold/silver  
Heel 5 cm



**Aliette**

620 - 50  
Sparkle gold  
Heel 5 cm



**Thea**

893-50  
Suede black  
Heel 5 cm



**ANNA KERN**

*Designed in Italy*

Heel 6 cm

**Adele**

740 - 60  
Nappa gold  
Heel 6 cm



**Lisette**

750 - 60  
Sparkle gold  
Heel 6 cm



**Adele**

740 - 60  
Nappa gold  
Heel 6 cm



**Jolie**

598 - 60  
Nappa gold  
Heel 6 cm



**Adline**

569 - 60  
Suede black  
Heel 6 cm



**Adele**

740 - 60  
Nappa silver  
Heel 6 cm



**Odile**

672 - 60  
Suede black  
Heel 6 cm





**Justine**

470 - 60  
Satin flesh  
Heel 6 cm



**Delphine**

780 - 60  
Sparkle black-silver  
Heel 6 cm



**Dorette**

700 - 60  
Satin bronze  
Heel 6 cm



**Manon**

640 - 60  
Satin bronze  
Heel 6 cm



**Blanche**

526 - 60  
Satin bronze  
Heel 6 cm



**Manon**

640 - 60  
Satin black  
Heel 6 cm



**Ninon**

875-60  
Nappa silver/gold  
Heel 6 cm



NEW

**Solange**

769-60  
Nappa antik  
Heel 6 cm



NEW

**ANNA KERN**

*Designed in Italy*

Heel 7.5 cm

**Regine**

981-75  
Suede black  
Heel 7.5 cm  
with zipper  
in the back

NEW



**Celeste**

800 - 75  
Suede beige  
with zipper  
in the back  
Heel 7.5 cm



**Mignon**

845 - 75  
Suede/Sparkle black  
with zipper  
in the back  
Heel 7.5 cm



**Vivian**

835 - 75  
Suede black  
with zipper  
in the back  
Heel 7.5 cm



**Elodie**

870 - 75  
Nappa silver  
Heel 7.5 cm



**Elodie**

870 - 75  
Sparkle gold  
Heel 7.5 cm





Heel 8 cm

ANNA KERN

*Designed in Italy*

**Giselle**

910 - 80  
Suede black/ Nappa  
antik  
Heel 8 cm



**Fleur**

830 - 80  
Suede black  
with zipper  
in the back  
Heel 8 cm



**Desiree**

950 - 80  
Nappa silver  
Heel 8 cm



**Ivette**

930 - 80  
Suede black  
Heel 8 cm



**Desiree**

950 - 80  
Nappa gold  
Heel 8 cm





## IN LOVE WITH A SHOE

---

Who says bridal shoes have to be uncomfortable? Werner Kern Bridal offers a wide range of feminine options to choose from so the bride can glide through the happiest day of her life like walking on clouds. As dance shoes, they combine superior fit and comfort with Italian design. Soft satin hugs the foot, while a breathable lining cools and the heel cushions every step. With these features, you can glide with relaxed feet from the altar to the dance floor.



Want to dance the night away in your bridal shoes or walk all day long even after the wedding? It's up to you.

For a glittering evening of wedding waltzes with your beloved, choose a suede sole. Or, for superior suitability for everyday use, choose smooth leather instead. These elegant models, available in white, pearl, nude and beige tones and also in red, gold and silver, flatter any wedding dress. And if you want to keep the magic going after your wedding, you can even carefully dye the satin models to a different colour.







WERNER  
KERN  
*Bridal*

*also available with street sole*

**Gala**

Satin white  
Heel 4.5 cm

comfort



*also available with street sole*

**July**

Satin white  
Heel 5.5 cm

NEW



*also available with street sole*

**Felice**

Satin white  
Heel 3.4 cm

comfort



*also available with street sole*

**Mable**

Satin white  
Heel 6 cm



*also available with street sole*

**Felice**

Satin white  
Heel 4.5 cm

comfort



*also available with street sole*

**Patty**

Satin white  
Heel 5.5 cm



*also available with street sole*

**India**

Satin white  
Heel 6 cm



*also available with street sole*



## Ashley

Satin white  
Heel 6 cm

comfort



also available with street sole

## July

Satin white  
Heel 6.5 cm



also available with street sole



## Paris

Satin white  
Heel 6 cm



also available with street sole

## Francis

Satin white  
Heel 6.5 cm



also available with street sole

## Betty

Satin white  
Heel 6.5 cm



also available with street sole

### Mable LS

Satin white  
Heel 6 cm



### Maite LS

Suede/Patent black  
Heel 7 cm



### Aurora LS

Patent beige  
Heel 8 cm



### India LS

Satin white  
Heel 6 cm



### Paris LS

Satin white  
Heel 6 cm



### Roslyn LS

Patent red  
Heel 8 cm





# A FEAST FOR THE SENSES

---

If you enjoy sauntering instead of simply walking; if you are reluctant to say goodbye to your dance shoes even after the milonga; if you want to enjoy the comfort and style of your favourite shoe even when going out with friends, at the club or at the next cocktail party – then the Nueva Epoca Street models are perfect for you!



When you step out in these shoes, you are making a confident statement, with unmistakable signature design in footwear.

These extravagant models feature street leather soles, transitioning smoothly from the dance floor to the street, where they turn heads with glamorous details, provocative colours and feminine cuts.

While your companions will mainly see your trend-conscious look, you will feel the luxury of excellent handi-craft with every step you take: The softest Mediterranean leather and a perfect fit make the luxury of Nueva Epoca a sensual experience.



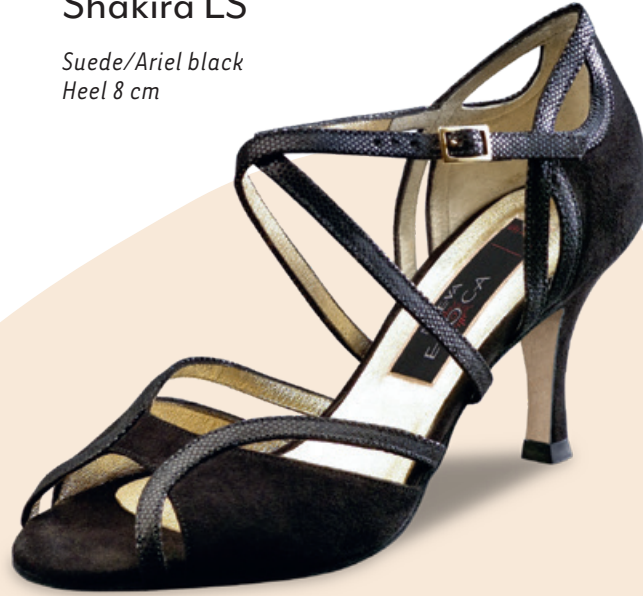
### Sienna LS

Suede/Ariel black  
Heel 7 cm



### Shakira LS

Suede/Ariel black  
Heel 8 cm



### Ornella LS

Stella glitter beige  
Heel 7 cm



### Simona LS

Nappa black/white  
Heel 8 cm



### Christina LS

Suede/Ariel black  
Heel 7 cm



### Cosima LS

Suede red/Ariel black  
Heel 7 cm





## Valeria LS

*Stella glitter beige*  
Heel 7 cm



## Lupe LS

*Patent black*  
Heel 8 cm



## Tanja LS

*Suede black*  
Heel 6 cm



## Scarlet LS

*Chevro/Brocade platin*  
Heel 6 cm



## Martha LS

*Suede black*  
Heel 8 cm



Werner Kern

Ballerinas

Lavorazione Sacchetto





# BALLERINAS

Heel 1.5 cm

We have designed this collection of leather-soled ballerinas for you, taking inspiration from one of our dancing shoes and the Italian sun.

**Myke** | *Suede/Patent black*



**Mori** | *Suede bordo/Patent black*



**Ada** | *Nappa black/red*



**Kay** | *Brocade black-silver/Patent black*



**Mila** | *Suede grey/Patent black*



**Mimi** | *Nappa black/white*



**Juno** | *Suede marrone/Chevro copper*



**Jil** | *Stella glitter/Patent black*



**Mia** | *Nappa beige/black*



**Beth** | *Nappa beige/marrone*



**Luna** | *Suede/Nappa black*





# Werner Kern

## Ballerinas

Lavorazione Sacchetto

Aoi | *Suede fuchsia/Grosgrain black*



Lee | *Velvet/Grosgrain black*



Mag | *Suede grey/Grosgrain black*



Linn | *Brocade black-silver/Grosgrain black*



Ava | *Samt bordo/Grosgrain black*



Ive | *Suede blue/Grosgrain black*



*Heel 1.5 cm*





Pina | *Chevro lind/bleu/rose*



Gea | *Nappa perl silver/nude*



Sandy | *Brocade/Nappa rose*



Sole | *Brocade/Chevro platin*



Fay | *Brocade/Chevro platin*





Baia | *Suede red/Ariel black*



Fee | *Suede marrone/Chevro copper*



Cassy | *Suede fuchsia/Ariel black*



Jane | *Suede grey/Ariel black*



Dana | *Suede blue/Ariel black*



Juma | *Suede green/Ariel black*



Andy | *Suede viola/Ariel black*



Kyle | *Nappa perl silber/nude*



Minu | *Stella glitter/Patent black*



Heel 1.5 cm



# Werner Kern

## Ballerinas

Lavorazione Sacchetto

Candy | *Brocade multi/Chevro platin*



Clara | *Nappa black*



Liu | *Nappa blue*





**4040 - pureflex** for men (sizes 5 - 12)

Nappa/Canvas white  
with split PU sole



**4045 - pureflex** for men (sizes 5 - 12)

Nappa/Velour black, with split PU sole,  
with inserted suede leather sole



**4050 - pureflex** for men (sizes 5 - 12)

Knit grey/black  
with split PU sole

NEW



**4010 - pureflex** for men (sizes 5 - 12)

Knit black/grey/white  
with split PU sole



**4015 - pureflex** for men (sizes 5 - 12)

Knit black/grey/red/white  
with split PU sole



**4055 - pureflex** for men (sizes 5 - 12)

Suede black  
with split PU sole

NEW



**4030 - pureflex** for men (sizes 5 - 12)

Knit blue/ black  
with split PU sole



**4035 - pureflex** for men (sizes 5 - 12)

Knit red/ black  
with split PU sole



**4020 - pureflex** for men (sizes 5 - 12)

Knit black  
with split PU sole



also available in half sizes



# MEN'S SHOES

---



## Ultralight models

ultralight

The mens models with ultralight heel and non-reinforced toe and heel caps feature superior wearing comfort while being extremely lightweight. The lightweight microfoam heel cushions the wearers steps, reducing impact on the joints and making each shoe light and comfortable.

### Sorrent

28063  
Suede/Coco black  
(Micro Heel)

ultralight



### Treviso

28049  
Nappa black  
(Micro Heel)

ultralight



### Prato

28057  
Suede/Patent black  
(Micro Heel)

ultralight



### Treviso

28049  
Nappa/Suede blue  
(Micro Heel)

ultralight





**NEW**

### Firenze

28053

Nappa black/Suede vino  
(Micro Heel)

ultralight



### Cuneo

28045

Suede grey  
(Micro Heel)

ultralight



### Trieste

28047

Nappa/Suede black  
(Micro Heel)

ultralight



### Cuneo

28045

Suede black  
(Micro Heel)

ultralight



### Carrara

28066

Nappa barolo/creme  
(Micro Heel)

ultralight



### Ancona

28044

Suede black  
(Micro Heel)

ultralight



### Cuneo

28045

Suede denim  
(Micro Heel)

ultralight



### Modena

28058

Suede black  
(Micro Heel)

ultralight





## Udine

28023  
Nappa cognac



## Udine

28023  
Nappa black/ Suede grey  
(Micro Heel)



## Lido

28016  
Nappa black  
(Micro Heel)



## Udine

28023  
Nappa/Suede black



## Arezzo

28012  
Nappa black  
(Micro Heel)



## Tarento

28024  
Deerleather black  
(Micro Heel)



## Udine

28023  
Nappa black/white  
(Micro Heel)



## Arezzo

28012  
Patent black  
(Micro Heel)



## Lugano

28015  
Nappa black



## Ravenna

28043  
Grattato blue  
(Micro Heel)



## Anzio

28068  
Suede black  
(Micro Heel)

NEW



## Pesaro

28017  
Nappa black  
(Micro Heel)



## Como

28018  
Nappa black  
(Micro Heel)  
supersoft  
handweaving



## Carrara LS

28066  
Nappa barolo/creme

NEW







## Bergamo

28051  
Nappa kaduna/creme  
(Micro Heel)



## Bergamo

28051  
Nappa black/white  
(Micro Heel)



## Forli

28019  
Nappa black  
Latin Heel 4 cm

latin



## Cordoba

Nappa black/white  
(Micro Heel)  
supersoft handweaving



## Bergamo

28051  
Nappa/Suede black  
(Micro Heel)



## Palermo

Nappa/Suede black  
Latin Heel 4 cm

latin



### Bari

28061  
Suede/Nappa black  
(Micro Heel)  
with removable  
footbed



### Parma

28065  
Suede black/grey  
(Micro Heel)  
with removable  
footbed

NEW



### Positano

28062  
Nappa black  
(Micro Heel)  
with removable  
footbed

NEW



### Bari

28061  
Suede/Nappa blue  
(Micro Heel)  
with removable  
footbed



### Cortino

28060  
Suede black  
(Micro Heel)  
with removable  
footbed



### Positano

28062  
Nappa mocca/sahara  
(Micro Heel)  
with removable  
footbed



### Bari

28061  
Suede blue/vino/beige  
(Micro Heel)  
with removable  
footbed



### Tadil

Nappa/Canvas sahara  
(Micro Heel)



### Río Negro

Patent/Suede black  
supersoft handweaving







### Sucre

Patent black/Suede red  
with split sole



### Belgrano

Nappa black/bordo  
hand brushed



### Monza

28036  
Deerleather black  
with split sole



### La Plata

Nappa white/Patent black  
with split sole



## Torino

28011  
Nappa black  
(Micro Heel)  
for wider feet



## Milano

28010  
Nappa black  
(Micro Heel)  
for wider feet



## Lecce

28040  
Patent black  
(Micro Heel)  
for wider feet



## Padua

28059  
Nappa black  
(Micro Heel)  
for wider feet



## Bormio

28034  
Deerleather black  
(Micro Heel)  
for wider feet



## Remo

28052  
Nappa/Suede black  
(Micro Heel)  
for wider feet



## Lucca

28048  
Nappa black  
(Micro Heel)  
with removable  
footbed



## Capri

28050  
Nappa black  
(Micro Heel)  
for wider feet  
with removable  
footbed





## Perugia

28064  
Nappa black  
(Micro Heel)  
for extra wide feet  
with removable  
foodbed

NEW



Extra large

## Fano

28012  
Nappa black  
(Micro Heel)  
available in  
sizes 13½ bis 16



## Catania

28067  
Nappa black  
for narrow feet

NEW



## Imola

28011  
Nappa black  
(Micro Heel)  
available in  
sizes 13½ bis 16



# VISUALIZING CUSTOMER WISHES

---



Dance shoes from Werner Kern are impressive for their diversity in form, colour and style. Finding the right dance shoe is an important step when it comes to having a fulfilling dance experience. Advising dancers on-site at a store specialising in these types of shoes is the first step. After individual recommendations and trying on different shoes, the customers desired model has been found.

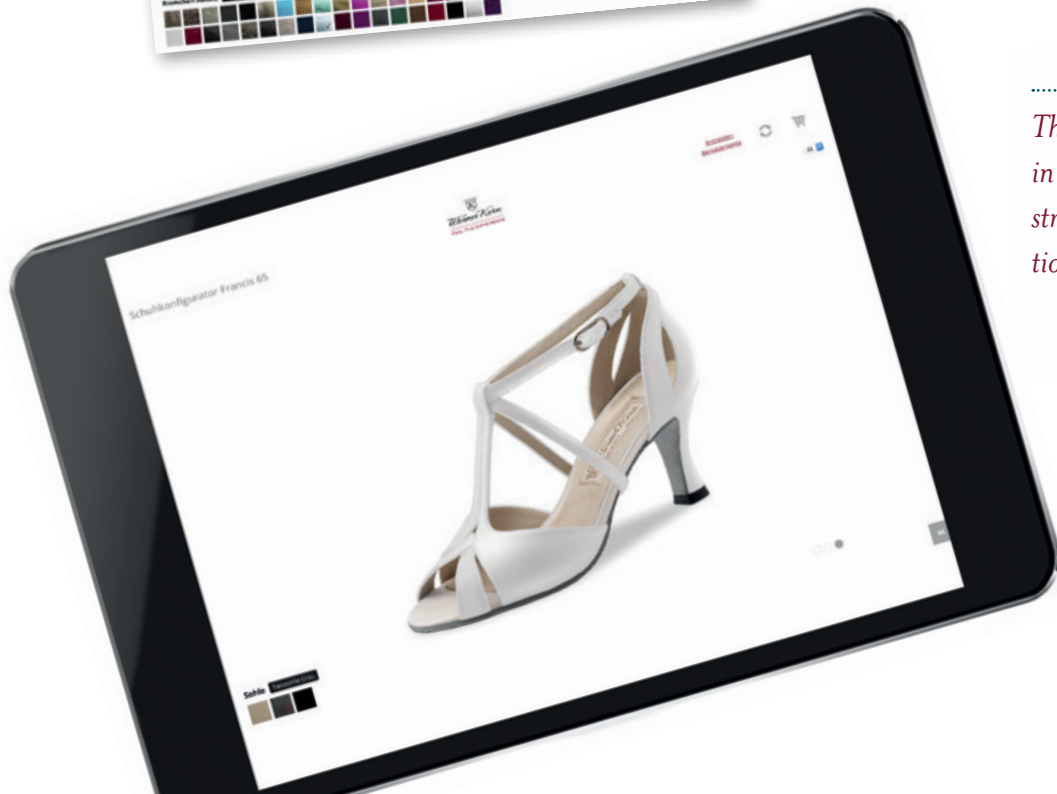
Retailers can use the model configuration tool to offer their customers individualised dance shoe service.

The virtual configuration tool makes it possible to personalise a large number of models and visualise the personal model for customers.





# WITH THE MODEL CONFIGURATION TOOL



*The customer can choose from amongst various materials and colours. Soles are available in light grey or black suede or in smooth beige leather, which is suitable for wearing on the street. Offering a wide selection of colours, materials and sole types, the model configuration tool unlocks a broad array of individual combinations.*







# PRODUCTION: MADE IN ITALY

---

Our commitment to regionality and quality applies not only to our leathers, but also to all elements of our dance shoes – we source our heels and soles, etc. from neighbouring, family-run businesses that have honed their craft over generations. Short transport routes and small local suppliers are the prerequisites for our exceptional quality.

Our dance shoes – their comfort, their design, their value – are an expression of the passion and skill of our employees and suppliers. Werner Kern – Made in Italy.

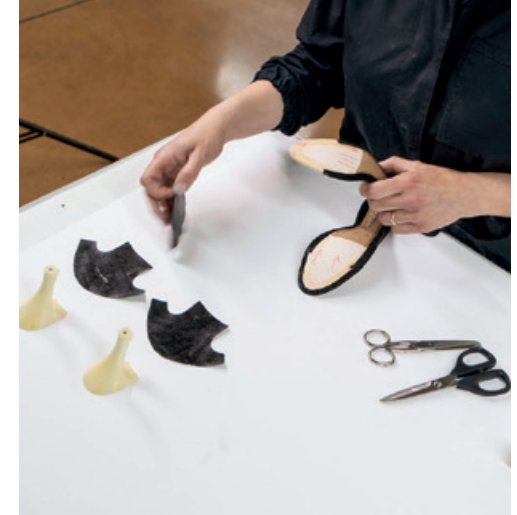




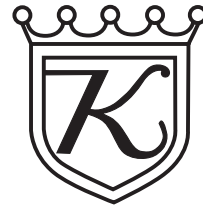
## *Genuine leather*

*All materials used are specially selected by us and checked in terms of their impact on the environment and our health in accordance with valid European standards. Our shoes are made exclusively from goatskin because it is one of the most valuable leathers and is only used in high-quality shoes and accessories.*

*Moreover, our fits have been tested by thousands of dancers over decades of hard practice and have been continuously developed by us accordingly. As a result, they ensure particularly comfortable dancing. You will notice that all Werner Kern dance shoes feel extremely light on the foot, once again the best prerequisite for really gliding across the dance floor.*







*Werner Kern*

FEEL THE DIFFERENCE



*Werner Kern*

FEEL THE DIFFERENCE

