



Werner Kern

FEEL THE DIFFERENCE



WERNER
KERN
Bridal

page
74



page
78

suny
by
ANNA KERN

page
58 / 96



Werner Kern
Ballerinas

page
82





page 12



page 44



page 62



NEW IN:

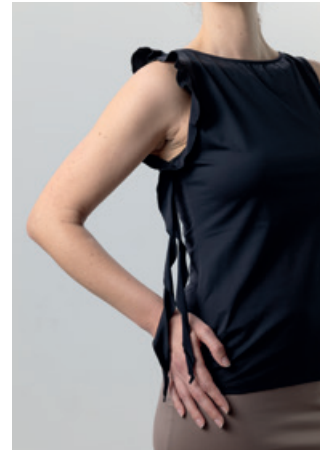
page 4



Lior
T004
red



Viva
S003
black



Lior
T004
black



Viva
S003
taupe



Viva
S003
red

WHEN MOVEMENT TAKES SHAPE

When dance becomes a language and body, music, and space enter into dialogue, it requires clothing that supports this expression – not restricts it. The dancewear by Werner Kern meets these demands through a thoughtful symbiosis of aesthetics, functionality, and exceptional comfort. Inspired by a passion for dance and crafted with care in Italy, every piece in our collection reflects the values that Werner Kern stands for: quality, elegance and attention to detail.

Our carefully selected fabrics are lightweight, elastic, and breathable – designed to meet the unique demands of dancing. They fit the body perfectly, promote freedom of movement, and at the same time feel pleasant on the skin.

Our garments are lovingly handcrafted in a small, specialised factory in Italy. Every skirt, every top and every dress bears the ‘Made in Italy’ seal – a promise of the highest quality, sustainable production and stylish elegance.



Sira

T005
black



Sari

S004
black



Suki

T007
black



Oya

S006
black





Phila

*T006
black*



Tyra

*S005
black*





Taya

D003
black



Taya

D003
blue



Zuri

D001
black



Zuri

D001
bordeaux



Alya
D002
black



Alya
D002
blue

Auri
T002
black



Nisha
P001
black



Rida

T001
black



Talvi

T003
black



Orla

S007
black



Liya

S002
black





Yari
T008
black



Vana
S001
black



Zaya
P002
black





ADDING DANCE TO LIFE

Dance embodies life – and life has many facets! Standard and Latin dances challenge the foot in different ways. From expansive to restrained, striding to spirited, dance shoes from Werner Kern Classic give the foot guidance and lightness. They offer support where it is needed and freedom where it is wanted.



The Werner Kern Classic collection comprises select materials, elegant aesthetics with contemporary fashion accents and the utmost in wearing comfort, for a proven combination. These dance shoes stand for trusted quality and superior comfort.

Our comfort models make dance a pleasure at any age, and some models have already gained a true cult following. Nappa leather as soft as gloves, supple kid suede, breathable leather linings and a fantastic array of fits to suit any foot make these models for ladies and gentlemen outstanding all-round dance shoes.

Carefully crafted by hand for you in Italy.



NEW IN

For everyone who loves sneakers!



Darcey

NEW

Suede red/Nappa white
• with removable footbed

comfort



Heaven

NEW

Nappa white/silver/brocade
• with removable footbed

comfort



Lacey

NEW

Nappa perl silver/Nappa white
• with removable footbed

comfort



Zelda

NEW

Suede denim/brocade silver
• with removable footbed

comfort



Darcey

NEW

Suede taupe/Chevro platin
• with removable footbed

comfort





Carol

Nappa white/silver/brocade
Micro Heel 1 cm
• with removable footbed

comfort



Carol

Suede/patent black/brocade
Micro Heel 1 cm
• with removable footbed

comfort



Carol

Suede/Chevro blue/brocade silver
Micro Heel 1 cm
• with removable footbed

comfort



Honey

Nappa/Brocade beige/Chevro platin
Micro Heel 1 cm
• with removable footbed

comfort



NEW



Madison

Suede black
Heel 0.5 cm
• wide toebox



Barefoot shoe

Taylor LS

Patent/Suede black
Heel 1.5 cm
(also available with
suede leather sole)



Taylor LS

Nappa caramel/creme
Heel 1.5 cm



Taylor LS

Nappa black/white
Heel 1.5 cm
(also available with
suede leather sole)



Taylor LS

Nappa barolo/creme
Heel 1.5 cm



Taylor, lightweight with suede and super flexible leather sole, giving freedom and mobility, great for Swing and Lindy Hop!





Ultralight slip on suede sole boots with soft suede uppers, perfect for Line Dancing and West Coast Swing. Handmade in Italy.

Cocco

*Suede black
Micro Heel 1.5 cm*



Harper

*Suede black
Micro Heel 1.5 cm*



Harper

*Suede marrone
Micro Heel 1.5 cm*



Flats 1.5 cm

with split sole



Ariana NEW

Suede taupe/Nappa beige-multi
 Micro Heel 1.5 cm
 • with split sole

comfort

Runa NEW

Brocade black-blue
 Micro Heel 1.5 cm
 • with split sole

comfort

Ariana NEW

Suede/Puntini blue
 Micro Heel 1.5 cm
 • with split sole

comfort

Abigail NEW

Brocade galaxy
 Micro Heel 1.5 cm
 • with split sole

comfort

Runa NEW

Suede black
 Micro Heel 1.5 cm
 • with split sole

comfort

Ariana NEW

Suede black/Stella black-platin
 Micro Heel 1.5 cm
 • with split sole

comfort

Fanny

*Nappa black
Micro Heel 1.5 cm*



Taylor

*Nappa black/white
Micro Heel 1.5 cm
(also available with
street sole)*



Fenja

*Nappa black
Micro Heel 1.5 cm*



Taylor

*Patent/Suede black
Micro Heel 1.5 cm
(also available with
street sole)*



Franca

*Suede black
Micro Heel 1.5 cm*



Vega

*Suede black
Micro Heel 1.5 cm*



Heel 3.4 cm / comfort



Stine

Nappa black
Heel 3.4 cm
•with removable footbed

comfort



Marina

Suede/Patent black
Heel 3.4 cm

comfort



Comfort models

comfort

Every individual's feet are unique. Our comfort footbed models offer dancers of all ages and those with especially discerning standards a secure hold and comfort while dancing. The anatomically formed joint support hugs the sole of the foot, providing stable support and comfort through a wider design.

Olivia

Suede black
Heel 3.4 cm
(also available with 6 cm)

comfort





Ronja

Suede black
Heel 3.4 cm
(also available with 6 cm)
• with stretch insert



comfort

Cindy

Nappa black
Heel 3.4 cm

comfort



Felice

Chevro antik
Heel 3.4 cm

comfort



Felice

Nappa black
Heel 3.4 cm

comfort



Felice

Nappa beige
Heel 3.4 cm

comfort



Daniela

Suede black
Heel 3.4 cm
• with elastic strap

comfort



Gala

Suede black
Heel 3.4 cm
(also available with 4.5 and 6 cm)

comfort



Alice

Quadrato black
Heel 3.4 cm

comfort



Heel 3.5 cm / comfort



Ariana

NEW

Nappa perl silver/Nappa white-silver
Heel 3.5 cm
• with split sole

comfort



Ariana

NEW

Suede/Puntini vino
Heel 3.5 cm
• with split sole

comfort



Bruni

NEW

Suede/Stella/Patent black
Heel 3.5 cm
• with split sole

comfort



Ariana

NEW

Suede taupe/Nappa beige-multi
Heel 3.5 cm
• with split sole

comfort



with split sole

Runa

Nappa black
Heel 3.5 cm
• with split sole

comfort



Runa

Suede black
Heel 3.5 cm
• with split sole

comfort



Runa

Brocade 15
Heel 3.5 cm
• with split sole

comfort



Kim

Chevro platin/Fantasia beige
Heel 3.5 cm

comfort



Solveig

Nappa perl silver
Heel 3.5 cm

comfort



Sanna

Quadrato/Patent black
Heel 3.5 cm

comfort



Vera

Nappa black
Heel 3.5 cm

comfort



Rikke

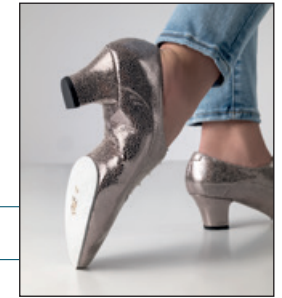
Suede black/
Stella glitter black
Heel 3.5 cm

comfort



Heel 4.5 cm / comfort

with split sole



Freya

Nappa black
Heel 3.5 cm

comfort



Marion

Nappa black
Heel 3.5 cm

comfort



Runa

Brocade black-black
Heel 4.5 cm
• with split sole

comfort



NEW

Ilka

Nappa black
Heel 3.5 cm

comfort



Ines

Nappa black
Heel 3.5 cm

comfort



Runa

Print antik-beige
Heel 4.5 cm
• with split sole

comfort



NEW

Ingrid

Suede black
Heel 4.5 cm
• with removable
footbed

comfort



Gala

Suede black
Heel 4.5 cm
(also available
with 3.4 and 6 cm)

comfort



Ronja

Brocade 15
Heel 4.5 cm
• with stretch insert

comfort



Emma

Nappa black/white
Heel 4.5 cm

comfort



Naia

Nappa beige
Heel 4.5 cm
• with stretch insert

comfort



Emma

Nappa kaduna/creme
Heel 4.5 cm

comfort



Jessie

Stella glitter blue
Heel 4.5 cm

comfort



Ashley

Suede black
Heel 4.5 cm
(also available
with 6 cm)

comfort



Debby

Nappa black
Heel 4.5 cm

comfort



Ruby

Suede black
Heel 4.5 cm
(also available
with 6 cm)

comfort



Tabea

Suede/Patent black
Heel 4.5 cm
• with removable
footbed

comfort



Gala

Chevro antik
Heel 4.5 cm

comfort



Gina

Nappa black
Heel 4.5 cm

comfort



Sidney

Nappa black
Heel 4.5 cm

comfort



Olivia

Nappa black
Heel 4.5 cm

comfort



Lea

Suede black
Heel 4.5 cm

comfort



••• *Heel 5 cm / comfort*

Laura

Shark antik
Heel 5 cm
• with elastic insert

comfort



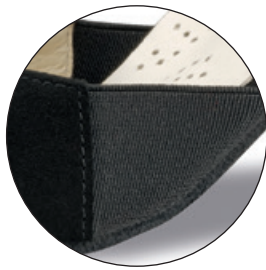
Laura

Nappa black
Heel 5 cm
• with elastic insert

comfort



Heel 6 cm / comfort



Ronja

Suede black
Heel 6 cm
(also available
with 3.4 cm)
• with stretch insert



comfort

Olivia

Suede black
Heel 6 cm
(also available
with 3.4 cm)

comfort



Layla

Nappa black
Heel 6 cm

comfort



Gala

Suede black
Heel 6 cm
(also available
with 3.4 and 4.5 cm)

comfort



Ashley

Suede black
Heel 6 cm
(also available
with 4.5 cm)

comfort



Kyra

Nappa black
Heel 6 cm

comfort



Merle

Suede black
Heel 6 cm

comfort



Heel 4.5 cm / comfort

Ruby

Suede black
Heel 6 cm
(also available
with 4.5 cm)

comfort



Bess

Suede black/Chevro antik
Heel 4.5 cm

comfort



Holly

Stella/Suede black
Heel 4.5 cm

comfort



Gilian

Nappa black
Heel 6 cm

comfort



Coleen

Chevro platin/Fantasia beige
Heel 4.5 cm

comfort



Sonia

Suede black
Heel 4.5 cm
(also available
with 5 cm)

comfort





Heel 5 cm / comfort

Ebony

Stella glitter blue
Heel 5 cm

comfort



Billy

Chevro antik
Heel 5 cm

comfort



Ruth

Nappa black
Heel 5 cm

comfort



Ruth

Nappa beige
Heel 5 cm

comfort



Harriet

Brocade black-blue
Heel 5 cm
• with stretch insert

comfort



NEW

Nellie

Suede/Patent black
Heel 5 cm

comfort



NEW



Gaby

Suede black/Chevro antik
Heel 5 cm

comfort



Sonia

Suede black
Heel 5 cm
(also available
with 4.5 cm)

comfort



Smilla

Nappa perl nude
Heel 5 cm

comfort



Fatima

Suede black
Heel 5 cm
(also available
with 6 cm)

comfort



Ilona

Suede black
Heel 5 cm

comfort



Heel 6 cm / comfort

Kim

Chevro silver/platin
Heel 6 cm

comfort



Georgia

Suede black
Heel 6 cm

comfort



Holly

Chevro platin/Fantasia beige
Heel 6 cm

comfort



Lindsay

Nappa red
Heel 6 cm

comfort



Paulette

Nappa perl nude
Heel 6 cm

comfort



Fatima

Suede black
Heel 6 cm
(also available
with 5 cm)

comfort



Ginny

Brocade black-silver/
Patent black
Heel 6 cm

comfort





NEW

Heel 5.5 cm

Francis
Nappa perl silver
Heel 5.5 cm



Bonnie
Chevro silver
Heel 5.5 cm



Tiziana
Chevro silver
Heel 5.5 cm



Astrid
Nappa perl nude
Heel 5.5 cm



Asta
Suede black
Heel 5.5 cm
(also available with 6.5 cm)



Claudia
Suede black
Heel 5.5 cm
(also available with 6.5 cm)



Eva
Suede black
Heel 5.5 cm
(also available for narrow feet > Niki)



Swantje
Suede black/
Chevro antik
Heel 5.5 cm



Francis

Suede black
Heel 5.5 cm
(also available
with 6.5 cm)



Blair

Suede black/
Neso bordo
Heel 5.5 cm



Holly

Suede blue/
Chevro silver
Heel 5.5 cm



Steph

Suede black/
Brocade black-silver
Heel 5.5 cm



Niki

Suede black
Heel 5.5 cm
• for narrow feet

narrow



Holly

Suede black/
Chevro antik
Heel 5.5 cm



Ellie

Suede black/
Brocade silver-multi
Heel 5.5 cm



Dora

Nappa perl nude
Heel 5.5 cm
• for narrow feet

narrow



Heel 6.5 cm

Isla

Suede black/
Neso blue
Heel 6.5 cm



Holly

Nappa beige/black
Heel 6.5 cm



Penny

Suede black/
Neso blue
Heel 6.5 cm



July

Nappa black
Heel 6.5 cm
(also available
with 8 cm)



Holly

Brocade black-silver/
Patent black
Heel 6.5 cm



Asta

Suede black
Heel 6.5 cm
(also available
with 5.5 cm)



Asta

Shark antik
Heel 6.5 cm



Claudia

Suede black
Heel 6.5 cm
(also available
with 5.5 cm)



Mary

*Chevro platin/
Fantasia beige
Heel 6.5 cm*



Dalia

*Suede black
Heel 6.5 cm*



Francis

*Suede black
Heel 6.5 cm
(also available
with 5.5 cm)*



Astrid

*Nappa/Suede black
Heel 6.5 cm*



Astrid

*Nappa perl silver
Heel 6.5 cm*



Eva

*Chevro silver
Heel 6.5 cm*



Eva

*Suede black/
Chevro antik
Heel 6.5 cm*



Eva

*Nappa perl nude
Heel 6.5 cm*





Paisley

Nappa black/white
Heel 6.5 cm

NEW



Ida

Stella glitter/
Suede black
Heel 6.5 cm
• for narrow feet

narrow



Portia

Nappa black/red
Heel 6.5 cm

NEW



Amy

Nappa perl nude
Heel 6.5 cm
• for narrow feet

narrow



Mary

Chevro fuchsia/multi
Heel 6.5 cm



Irina

Suede black
Heel 6.5 cm
• for narrow feet

narrow



July

Chevro antik
Heel 6.5 cm



July

Brocade silver multi
Heel 6.5 cm



Elsa

Suede black
Heel 6.5 cm
• with elastic strap



Heel 8 cm

even higher?

Asta

Nappa black
Heel 8 cm



July

Nappa black
Heel 8 cm
(also available
with 6.5 cm)



Alina

Glitter multi
Heel 8 cm



Heel 5.5 cm

Patty

Chevro antik
Heel 5.5 cm



Patty

Nappa black
Heel 5.5 cm
(also available
with 6.5 and 8 cm)



Betty

Nappa black
Heel 5.5 cm
(also available
with 6.5 cm)



Patty

Quadrato black
Heel 5.5 cm



Patty

Nappa red
Heel 5.5 cm



Linda

Nappa black
Heel 5.5 cm
(also available
with 6.5 cm)



Shirley

Nappa black
Heel 5.5 cm



Celine

Nappa black
Heel 5.5 cm



comfort

NEW

Heather

Suede black/Chevro antik
Heel 5.5 cm



Heel 6.5 cm



NEW

Morgana

Suede black/red
Heel 6.5 cm



Rita

Nappa black
Heel 5.5 cm



Ines

Nappa red
Heel 6.5 cm



Fabiola

Nappa black
Heel 6.5 cm
• for narrow feet

narrow



Ines

Nappa black
Heel 5.5 cm
(also available
with 6.5 cm)



Ines

Nappa black
Heel 6.5 cm
(also available
with 5.5 cm)



Abby

Brocade black-silver
Heel 6.4 cm
with silver metallic heel



Betty

*Brocade silver multi
Heel 6.5 cm*



Melodie

*Suede black
Heel 6.4 cm
with silver metallic heel*



Sarah

*Suede black
Heel 6.4 cm
with silver metallic heel*



Betty

*Nappa black
Heel 6.5 cm
(also available
with 5.5 cm)*



Betty

*Chevro antik
Heel 6.5 cm*



Betty

*Brocade 15
Heel 6.5 cm*



Linda

*Chevro silver
Heel 6.5 cm*



Linda

*Nappa black
Heel 6.5 cm
(also available
with 5.5 cm)*



Jackie

Suede/Stella glitter black
Heel 6.5 cm



Carina

Suede black
Heel 6.5 cm



Rita

Satin flesh
Heel 6.5 cm



Andrea

Nappa black
Heel 6.5 cm



Laura

Satin flesh
Heel 6.5 cm
• with elastic insert



Patty

Nappa black
Heel 6.5 cm
(also available
with 5.5 and 8 cm)



••• Heel 8 cm

Patty

Nappa black
Heel 8 cm
(also available
with 5.5 and 6.5 cm)





SEDUCTION FOR THE FEET

Argentine tango is passion brought to life through dance. The rhythm of the music sparks intense communication between dance partners: every movement a statement. Extravagant and supple – the ideal shoe is as elegant as the dance itself.

It provides support where necessary and offers freedom for boundless, spirited expression when the dance and the partners demand it. The models in the Nueva Epoca collection reflect the joy of Italian design with exquisite details and striking colours with assertive lines.

The trendsetters in the Nueva Epoca collection are made by hand in Italy, using traditional methods. Painstakingly selected materials include kid leather as soft as gloves, breathable leather linings, a flexible latex midsole and shock-absorbing heel, all providing an incomparable feel both during wearing and dancing. The high-quality suede sole allows for easy, controllable turns and gliding on the dance floor. It's a new era in dance – in more than just looks!



Heel 6 cm / slim

Karen

Suede/Patent black
Heel 6 cm



Joy

Suede/Patent black
Heel 6 cm
• for narrow feet

narrow



Paris

Satin white
Heel 6 cm



India

Satin white
Heel 6 cm



Mable

Satin white
Heel 6 cm



Catalina

Suede/Puntini vino
Heel 6 cm



Mara

Suede/Stella glitter black
Heel 6 cm



Marissa

Suede red
Heel 6 cm



Sierra

Chevro platin
Heel 6 cm



Rose

Chevro/Brocade platin
Heel 6 cm



Heel 7 cm / slim

Adriana

Puntini/Suede blue
Heel 7 cm



Nuria

Stella glitter beige
Heel 7 cm



Vienna

Suede/Puntini vino
Heel 7 cm



Martinee

Chevro/Cielo fuchsia
Heel 7 cm



Berenice

Stella glitter beige
Heel 7 cm



Sylvie

Stella glitter black
Heel 7 cm



Cleo

Chevro platin
Heel 7 cm



Ornella

Stella glitter beige
Heel 7 cm



Caia

*Chevro silver
Heel 7 cm*



Linea

*Suede red
Heel 7 cm*



Maxima

*Suede indigo/Ariel black
Heel 7 cm*



Riana

*Suede black
Heel 7 cm
with silver
metallic heel*



Yolanda

*Chevro silver
Heel 7 cm*



Cosima

*Suede red/
Ariel black
Heel 7 cm*



Gracia

*Suede blue
Heel 7 cm*



Sienna

*Suede/Ariel black
Heel 7 cm*



Pearl

*Chevro silver/
Brocade platin
Heel 7 cm*



Violeta

Chevro/Petrol prugna
Heel 7 cm



Valeria

Stella glitter beige
Heel 7 cm



Paloma

Nappa white/Patent black
Heel 7 cm



Christina

Suede/Ariel black
Heel 7 cm



Lydia

Suede grey/Ariel black
Heel 7 cm



Heel 8 cm / slim

Camelia

Chevro/Petrol prugna
Heel 8 cm



Jacinta

Suede black
Heel 8 cm
with gold metallic heel



Martha

Suede/Patent black
Heel 8 cm



April

Suede/Ariel black
Heel 8 cm





Beatriz

Stella glitter/Suede black/red
Heel 8 cm



Jaida

Suede black
Heel 8 cm



Helen

Suede hazel/Chevro copper
Heel 8 cm



Shakira

Suede/Ariel black
Heel 8 cm





Amalia

*Suede black
Heel 8 cm*



Serena

*Suede black
Heel 8 cm*



Angeles

*Chevro/Print capri blue
Heel 8 cm*



Flavia

*Suede red
Heel 8 cm
with gold metallic heel*





Simona

Nappa black/white
Heel 8 cm



Gloria

Chevro/Brocade platin
Heel 8 cm



Penelope

Chevro/Nappa Print olive
Heel 8 cm



Heel 9 cm / slim

Lupe

Patent black
Heel 8 cm



Adora

Patent red
Heel 8 cm



Nora

Suede/Patent black
Heel 9 cm



- also available in half sizes
- with removable footbed



130 - pureflex for women (sizes 3 ½ - 8)

Knit blue/ black
 • with split PU sole



150 - pureflex for women (sizes 3 ½ - 8)

Knit grey/black
 • with split PU sole



135 - pureflex for women (sizes 3 ½ - 8)

Knit red/ black
 • with split PU sole



120 - pureflex for women (sizes 3 ½ - 8)

Knit black
 • with split PU sole



THE EMBODIMENT OF PERFECTION

Precise steps, concentrated bodies, smooth, practiced repetitions. And with it all, a lightweight, comfortable shoe that can keep up with you during all your training needs. Down-to-earth, sporty, focused on the essentials – that's the simple SUNY dance sneaker by Anna Kern, available for both **women and men**.



As a second shoe for training, it wins points for its sporty design, casual look and unpretentious air.

Made of lightweight, breathable mesh material, it hugs the foot comfortably for a perfect fit.

Its PU sole has two parts (split-sole) for superior flexibility and a flat heel, so controlled turns during training are a breeze. Men and women can wear the same casual models while still benefiting from an individual feminine or masculine fit.

SUNY by Anna Kern is the modern dance sneaker that adds a sporty twist to any training session, from salsa to kizomba and from bachata to rueda.



- also available in half sizes
- with removable footbed

180 - pureflex for women (sizes 3 ½ - 8)
 Knit beige
 • with split PU sole



170 - pureflex for women (sizes 3 ½ - 8)
 Knit navy
 • with split PU sole



NEW **190 - pureflex** for women (sizes 3 ½ - 8)
 Knit red
 • with split PU sole



160 - pureflex for women (sizes 3 ½ - 8)
 Knit white
 • with split PU sole



175 - pureflex for women (sizes 3 ½ - 8)
 Knit petrol
 • with split PU sole



165 - pureflex for women (sizes 3 ½ - 8)
 Knit fuchsia
 • with split PU sole



185 - pureflex for women (sizes 3 ½ - 8)
 Knit capri
 • with split PU sole



- also available in half sizes
- with removable footbed



7005 for women (sizes 3 ½ - 8)
Suede blue



7010 for women (sizes 3 ½ - 8)
Leather black



7020 for women (sizes 3 ½ - 8)
Leather white/Suede beige



7015 for women (sizes 3 ½ - 8)
Suede black



7025 for women (sizes 3 ½ - 8)
Leather white



7030 for women (sizes 3 ½ - 8)
Leather/Suede black





ENCHANTINGLY VIBRANT

When the curtain goes down on the daily routine, life behind the scenes starts. This is where the body, rhythm and music come together as one to form a vibrant presence.

Salsa and bachata invigorate the body, halting the whirl of thoughts – welcome to the moment! Demanding rhythms, firm posture and mobility, and now your foot needs a dance partner that attracts the eye not just with a perfect fit and secure hold, but also with unconventional and provocative design.

ANNA KERN

Designed in Italy

Anna Kern shoes are the modern-day princesses among ladies dance shoes. Their youthful, progressive design is striking: glittering brocades, gold and silver, and a lovely narrow heel offer a fresh take on the idea of the dance shoe. Leather uppers and linings are joined through superior craftsmanship to form a shoe that represents the perfect marriage of the joy of movement and vitality expressed by Latin dance and a generous dash of glamour.





Dorette
700 - 60
Satin bronze
Heel 6 cm



Vianne

1111 - 50
 Satin flesh
 Heel 5 cm

NEW



Esmee

1117 - 50
 Satin bronze/flesh
 Heel 5 cm

NEW



Oceane

1101 - 60
 Satin flesh
 Heel 6 cm

NEW



Soleil

1018 - 60
 Microfiber beige
 Heel 6 cm

NEW



Louve

1102 - 75
 Satin flesh
 Heel 7.5 cm

NEW



Mireille

1118 - 60
 Satin bronze/flesh
 Heel 6 cm

NEW





⋮ *Heel 1 cm*
⋮
⋮
⋮
⋮
⋮

Margo
1054 - 10
Nappa gold
Heel 1 cm



⋮ *Heel 3 cm*
⋮
⋮
⋮
⋮
⋮

Babette
559 - 30
Suede black
Heel 3 cm



Heel 3.5 cm



ANNA KERN

Designed in Italy

with split sole

Fabienne

599 - 35
Nappa silver
Heel 3.5 cm



Sandrine

002 - 35
Suede beige/Print gold
Heel 3.5 cm
• with split sole



Sandrine

002 - 35
Suede/Print black
Heel 3.5 cm
• with split sole



Monique

973 - 35
Satin flesh
Heel 3.5 cm



Brienne

007 - 35
Suede beige/Print gold
Heel 3.5 cm
• with split sole



Brienne

007 - 35
Suede/Print black
Heel 3.5 cm
• with split sole





Heel 5 cm

Corinne

1086 - 50
Nappa antik multi
Heel 5 cm



Christelle

1027 - 50
Brocade/Nappa silver
Heel 5 cm



Elaine

990 - 50
Suede black
Heel 5 cm
with zipper
in the back



Magalie

908 - 50
Nappa silver
Heel 5 cm



Denise

572 - 50
Suede black
Heel 5 cm



Clemence

960 - 50
Suede black
Heel 5 cm



Noel

874 - 50
Nappa gold/silver
Heel 5 cm



Aliette

620 - 50
Sparkle gold
Heel 5 cm



Thea

893 - 50
Suede black
Heel 5 cm



Meline

580 - 50
Nappa gold
Heel 5 cm



ANNA KERN

Designed in Italy



Heel 6 cm



Adele

740 - 60
Nappa gold
Heel 6 cm



Adele

740 - 60
Suede black
Heel 6 cm



Adele

740 - 60
Nappa silver
Heel 6 cm

Lisette

750 - 60
Sparkle gold
Heel 6 cm



Justine

470 - 60
Satin flesh
Heel 6 cm



Jolie

598 - 60
Nappa gold
Heel 6 cm



Delphine

780 - 60
Sparkle black-silver
Heel 6 cm



Odile

672 - 60
Suede black
Heel 6 cm



Blanche

526 - 60
Satin bronze
Heel 6 cm



ANNA KERN

Designed in Italy

Ninon
875 - 60
Nappa silver/gold
Heel 6 cm



Solange
769 - 60
Nappa antik
Heel 6 cm



Charlize
1028 - 60
Brocade/Nappa gold
Heel 6 cm



Melisande
1000 - 60
Suede beige
Heel 6 cm
with zipper
in the back



Heel 7.5 cm

Regine
981 - 75
Suede black
Heel 7.5 cm
with zipper
in the back



Vivian
835 - 75
Suede black
Heel 7.5 cm
with zipper
in the back



Heel 8 cm

ANNA KERN

Designed in Italy

Celeste

800 - 75
Suede beige
with zipper
in the back
Heel 7.5 cm



Desiree

950 - 80
Nappa silver
Heel 8 cm



Elodie

870 - 75
Sparkle gold
Heel 7.5 cm



Ivette

930 - 80
Suede black
Heel 8 cm



Desiree

950 - 80
Nappa gold
Heel 8 cm





IN LOVE WITH A SHOE

Who says bridal shoes have to be uncomfortable? Werner Kern Bridal offers a wide range of feminine options to choose from so the bride can glide through the happiest day of her life like walking on clouds. As dance shoes, they combine superior fit and comfort with Italian design. Soft satin hugs the foot, while a breathable lining cools and the heel cushions every step. With these features, you can glide with relaxed feet from the altar to the dance floor.



Want to dance the night away in your bridal shoes or walk all day long even after the wedding? It's up to you.

For a glittering evening of wedding waltzes with your beloved, choose a suede sole. Or, for superior suitability for everyday use, choose smooth leather instead. These elegant models, available in white, pearl, nude and beige tones and also in red, gold and silver, flatter any wedding dress. And if you want to keep the magic going after your wedding, you can even carefully dye the satin models to a different colour.



WERNER
KERN
Bridal

also available with street sole

Gala

Satin white
Heel 4.5 cm

comfort



also available with street sole

Felice

Satin white
Heel 4.5 cm

comfort



also available with street sole

July

Satin white
Heel 5.5 cm



also available with street sole

Patty

Satin white
Heel 5.5 cm



also available with street sole

Felice

Satin white
Heel 3.4 cm

comfort



also available with street sole

Mable

Satin white
Heel 6 cm



also available with street sole

India

Satin white
Heel 6 cm



also available with street sole

Mona

Satin white
Heel 6.5 cm



also available with street sole

Ashley

Satin white
Heel 6 cm

comfort



also available with street sole

Paris

Satin white
Heel 6 cm



also available with street sole

July

Satin white
Heel 6.5 cm



also available with street sole

Francis

Satin white
Heel 6.5 cm



also available with street sole

Betty

Satin white
Heel 6.5 cm



also available with street sole



Mable LS

Satin white
Heel 6 cm



Maite LS

Suede/Patent black
Heel 7 cm



Aurora LS

Patent beige
Heel 8 cm



India LS

Satin white
Heel 6 cm



Paris LS

Satin white
Heel 6 cm



Roslyn LS

Patent red
Heel 8 cm



A FEAST FOR THE SENSES

If you enjoy sauntering instead of simply walking; if you are reluctant to say goodbye to your dance shoes even after the milonga; if you want to enjoy the comfort and style of your favourite shoe even when going out with friends, at the club or at the next cocktail party – then the Nueva Epoca Street models are perfect for you!



When you step out in these shoes, you are making a confident statement, with unmistakable signature design in footwear.

These extravagant models feature street leather soles, transitioning smoothly from the dance floor to the street, where they turn heads with glamorous details, provocative colours and feminine cuts.

While your companions will mainly see your trend-conscious look, you will feel the luxury of excellent handi-craft with every step you take: The softest Mediterranean leather and a perfect fit make the luxury of Nueva Epoca a sensual experience.



Sienna LS

Suede/Ariel black
Heel 7 cm



Shakira LS

Suede/Ariel black
Heel 8 cm



Ornella LS

Stella glitter beige
Heel 7 cm



Simona LS

Nappa black/white
Heel 8 cm



Christina LS

Suede/Ariel black
Heel 7 cm



Cosima LS

Suede red/Ariel black
Heel 7 cm



Valeria LS

*Stella glitter beige
Heel 7 cm*



Lupe LS

*Patent black
Heel 8 cm*



Tanja LS

*Patent black
Heel 6 cm*



Scarlet LS

*Chevro/Brocade platin
Heel 6 cm*



Martha LS

*Suede black
Heel 8 cm*





.....

We have designed this collection of leather-soled ballerinas for you, taking inspiration from one of our dancing shoes and the Italian sun.

Werner Kern
Ballerinas
Lavorazione Sacchetto

BALLERINAS

Heel 1.5 cm

Ada | *Nappa black/red*



Mia | *Nappa beige/black*



Candy | *Brocade multi/Chevro platin*



Gea | *Nappa perl silver/nude*



Lee | *Velvet/Grosgrain black*



Clara | *Nappa black*



Sandy | *Brocade/Nappa rose*



Kyle | *Nappa perl silver/nude*



Liu | *Nappa blue*



Sole | *Brocade/Chevro platin*



MEN'S SHOES



Salerno

NEW

28074
Suede denim/Nappa white
• with removable footbed

comfort



Roma

NEW

28076
Nappa black
• with removable footbed

comfort



Salerno

NEW

28074
Suede jeans/Nappa white
• with removable footbed

comfort



Marsala

NEW

28075
Nappa white
• with removable footbed

comfort



Salerno

NEW

28074
Suede taupe/Nappa white
• with removable footbed

comfort







Ultralight models

ultralight

The mens models with ultralight heel and non-reinforced toe and heel caps feature superior wearing comfort while being extremely lightweight. The lightweight microfoam heel cushions the wearers steps, reducing impact on the joints and making each shoe light and comfortable.

Treviso

28049

Nappa/Suede blue
(Micro Heel)

ultralight



Firenze

28053
Nappa black/Suede vino
(Micro Heel)

ultralight



Cuneo

28045
Suede grey
(Micro Heel)

ultralight



Treviso

28049
Nappa black
(Micro Heel)

ultralight



Cuneo

28045
Suede black
(Micro Heel)

ultralight



Carrara

28066
Nappa barolo/creme

ultralight



Ancona

28044
Suede black
(Micro Heel)

ultralight



Cuneo

28045
Suede denim
(Micro Heel)

ultralight



Modena

28058
Suede black
(Micro Heel)

ultralight



Udine

28023
Nappa cognac



Udine

28023
Nappa black/Suede grey
(Micro Heel)



Udine

28023
Nappa/Suede black



Arezzo

28012
Nappa black
(Micro Heel)



Trapani

28069
Nappa/Suede black



Udine

28023
Nappa black/white
(Micro Heel)



Arezzo

28012
Patent black
(Micro Heel)



Lido

28016
Nappa black
(Micro Heel)



Ravenna

28043
Grattato blue
(Micro Heel)



Tarento

28024
Nappa black
(Micro Heel)



Pesaro

28017
Nappa black
(Micro Heel)



Lugano

28015
Nappa black



Como

28018
Nappa black
(Micro Heel)
supersoft
handweaving



Cordoba

Nappa black/white
(Micro Heel)
supersoft handweaving





Bergamo

28051
Nappa kaduna/creme
(Micro Heel)



Forli

28019
Nappa black
Latin Heel 4 cm



latin

Bergamo

28051
Nappa black/white
(Micro Heel)



Palermo

Nappa/Suede black
Latin Heel 4 cm



latin

Olbia

28072
Suede black
(Micro Heel)
• with removable foodbed



Bergamo

28051
Nappa/Suede black
(Micro Heel)



Positano

28062
Nappa cognac/blue
(Micro Heel)
• with removable
foodbed



Positano

28062
Suede denim/Nappa white
(Micro Heel)
• with removable
foodbed



Positano

28062
Nappa black
(Micro Heel)
• with removable
foodbed



Positano

28062
Nappa mocca/sahara
(Micro Heel)
• with removable
foodbed



Carrara LS

28066
Nappa barolo/creme



Bari

28061
Suede/Nappa black
(Micro Heel)
• with removable
foodbed



Bari

28061
Suede/Nappa blue
(Micro Heel)
• with removable
foodbed



Bari

28061
Suede blue/vino/beige
(Micro Heel)
• with removable
foodbed



Cortino

28060
Suede black
(Micro Heel)
• with removable
foodbed



Tadil

Nappa/Canvas sahara
(Micro Heel)



Belgrano

Nappa black/bordo
hand brushed



Río Negro

Patent/Suede black
supersoft handweaving





Pistoia

28070
Suede black
• with split sole



Ragusa

28073
Suede black
(Micro Heel)
• with split sole

NEW



Monza

28036
Nappa black
• with split sole



Catania

28067
Nappa black
(Micro Heel)
• for narrow feet



Torino

28011
Nappa black
(Micro Heel)
• for wider feet



Bormio

28034
Nappa black
(Micro Heel)
• for wider feet



Bormio

28034
Nappa cognac
(Micro Heel)
• for wider feet



NEW

Padua

28059
Nappa black
(Micro Heel)
• for wider feet



Milano

28010
Nappa black
(Micro Heel)
• for wider feet



Lecce

28040
Patent black
(Micro Heel)
• for wider feet



Lucca

28048
Nappa black
(Micro Heel)
• with removable
foodbed



Capri

28050
Nappa black
(Micro Heel)
• for wider feet
• with removable
foodbed



Remo

28052
Nappa/Suede black
(Micro Heel)
• for wider feet





Brescia

28071

Nappa black
(Micro Heel)

- for wider feet
- supersoft handweaving
- with removable
foodbed



Extra large

Fano

28012

Nappa black
(Micro Heel)

available in
sizes 13½ - 16



Perugia

28064

Nappa black
(Micro Heel)

- for extra wide feet
- with removable
foodbed



Imola

28011

Nappa black
(Micro Heel)

- for wider feet
- available in
sizes 13½ - 16



- also available in half sizes
- with removable footbed

7405 for men (sizes 5 - 12)
Suede blue



7410 for men (sizes 5 - 12)
Leather black



7420 for men (sizes 5 - 12)
Leather white/Suede beige



7415 for men (sizes 5 - 12)
Suede black



7425 for men (sizes 5 - 12)
Leather white



7430 for men (sizes 5 - 12)
Leather/Suede black





- also available in half sizes
- with removable footbed

4050 - pureflex for men (sizes 5 - 12)

Knit grey/black
• with split PU sole



4060 - pureflex for men (sizes 5 - 12)

Knit white
• with split PU sole



4030 - pureflex for men (sizes 5 - 12)

Knit blue/black
• with split PU sole



4035 - pureflex for men (sizes 5 - 12)

Knit red/black
• with split PU sole



4020 - pureflex for men (sizes 5 - 12)

Knit black
• with split PU sole



VISUALIZING CUSTOMER WISHES



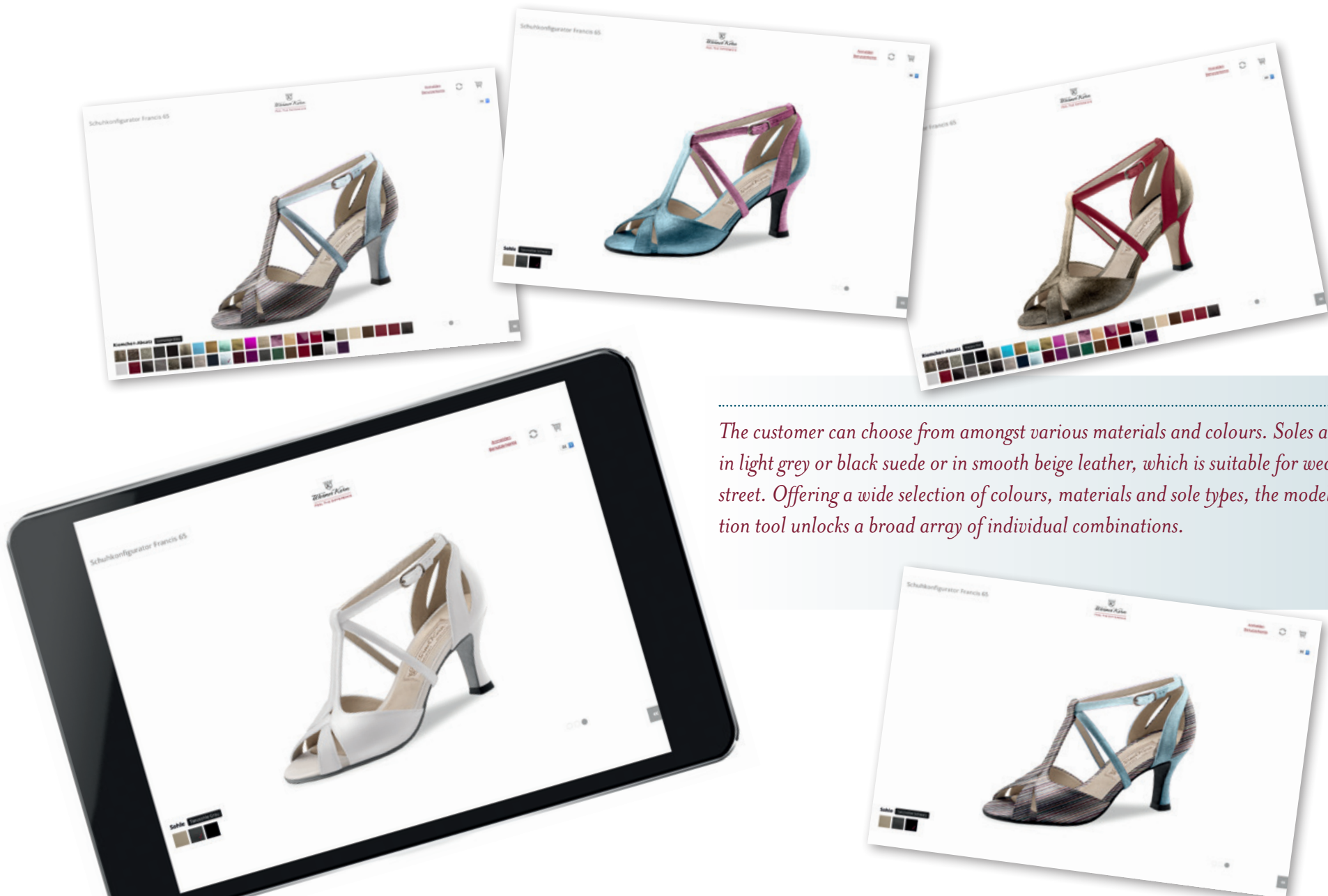
Dance shoes from Werner Kern are impressive for their diversity in form, colour and style. Finding the right dance shoe is an important step when it comes to having a fulfilling dance experience. Advising dancers on-site at a store specialising in these types of shoes is the first step. After individual recommendations and trying on different shoes, the customers desired model has been found.

Retailers can use the model configuration tool to offer their customers individualised dance shoe service.

The virtual configuration tool makes it possible to personalise a large number of models and visualise the personal model for customers.



WITH THE MODEL CONFIGURATION TOOL



The customer can choose from amongst various materials and colours. Soles are available in light grey or black suede or in smooth beige leather, which is suitable for wearing on the street. Offering a wide selection of colours, materials and sole types, the model configuration tool unlocks a broad array of individual combinations.



PRODUCTION: MADE IN ITALY

Our commitment to regionality and quality applies not only to our leathers, but also to all elements of our dance shoes – we source our heels and soles, etc. from neighbouring, family-run businesses that have honed their craft over generations. Short transport routes and small local suppliers are the prerequisites for our exceptional quality.

Our dance shoes – their comfort, their design, their value – are an expression of the passion and skill of our employees and suppliers. Werner Kern – Made in Italy.

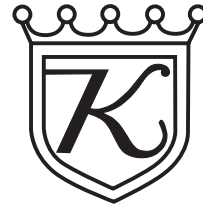


Genuine leather

All materials used are specially selected by us and checked in terms of their impact on the environment and our health in accordance with valid European standards. Our shoes are made exclusively from goatskin because it is one of the most valuable leathers and is only used in high-quality shoes and accessories.

Moreover, our fits have been tested by thousands of dancers over decades of hard practice and have been continuously developed by us accordingly. As a result, they ensure particularly comfortable dancing. You will notice that all Werner Kern dance shoes feel extremely light on the foot, once again the best prerequisite for really gliding across the dance floor.





Werner Kern

FEEL THE DIFFERENCE



Werner Kern

FEEL THE DIFFERENCE

